



*Villa Tugendhat in Brno – Czech Republic, 1928, arch. Ludwig Mies van der Rohe.  
Credit: J. Stubbs, New York*



*Pravda printshop and publishing house, Moscow, 1931–37, arch. P.A. Golosov, A.V. Kurovsky, monument of local importance. After the fire in February 2006. Credit: Schusev Museum of Architecture, Moscow. Photo: J. I. Rogozin*





*Gosplan Garage of the State Planning Committee, Moscow, 1933–36, arch. K. S. Melnikov, V.I. Kurochkin, monument of local importance. Condition in 2005. Credit: A. Zalivako, Berlin*



*Kauchuk Workers Club, Moscow, 1927–29, arch. K. S. Melnikov. Replacement of the wooden windowframes with mirror-glazed metal-framed windows. Condition in 2006. Credit: A. Zalivako, Berlin*



*Student Commune House, Moscow, 1929, arch. I. Nikolaev. View of the dormitory in 2005. Credit: H. Zimmermann, Berlin*





*Narkomfin Commune House, Moscow, 1928–30, arch. M. Ginzburg, I. Milinis. Roof in 2005.*  
Credit: A. Dill, Darmstadt



*Narkomfin Commune House, Moscow, 1928–30, arch. M. Ginzburg, I. Milinis, View from south-west in 2005*  
Credit: H. Zimmermann, Berlin





*Narkomfin Commune House, Moscow, 1928–30, arch. M. Ginzburg, I. Milinis. Interior of an abandoned apartment, 2005. Credit: A. Zalivako, Berlin*



*Narkomfin Commune House, Moscow, 1928–30, arch. M. Ginzburg, I. Milinis. Inside an apartment, 2005. Credit: H. Zimmermann, Berlin*



⇐ *Krasnoselskaya metrostation pavilion, Moscow, 1935, arch. B. Vilensky, V. Ershov, Entrance in 2005. Credit: H. Zimmermann, Berlin*

↙ (left) *Arbatskaya metrostation, Moscow, 1953, arch. L. Polyakov, V. Pelevin. 2005. Credit: A. Dill, Darmstadt*

↘ (right) *Mayakovskaya metrostation, Moscow, 1938, arch. A. Dushkin, artist A. Deineka. 2006. Credit: Kudryavtsev, Alexander, Dushkina Natalia (eds): 20th Century. Preservation of Cultural Heritage. Moscow 2006*







*Melnikov House-Studio in Moscow, 1927–29, arch. K. Melnikov.  
View from Krivoarbatsky lane and from the rear side, 2005. Credit: Schusev Museum of  
Architecture, Moscow. Photo: A. Komlev, Moscow*

*Melnikov House-Studio in Moscow, 1927–29, arch. K. Melnikov. Bedroom and Studio, 2005.  
Credit: H. Zimmermann, Berlin*







Powerstation of the "Krasnoje znamja" Textile Factory in St. Petersburg, 1926–1928, arch. E. Mendelsohn. Condition in 2005. Credit: M. Stiglitz. Photo: V. Egorovsky, V. Lelina, A. Pastukh



↑ Watertower of the "Krasny Gvozdilshchik" Cable Factory in St. Petersburg, 1930–1931, arch. J. Chernikhov. Condition in 2005. Credit: M. Stiglitz. Photo: V. Egorovsky, V. Lelina, A. Pastukh

⇐ Club of the textile workers in Rostokino near Moscow, 1927–29, arch. L. A. Vesnin. Credit: I. Chepkunova, Moscow



Metal workers club in Kashira near Moscow. 1929–30, arch. unknown. Current condition. Credit: I. Chepkunova, Moscow





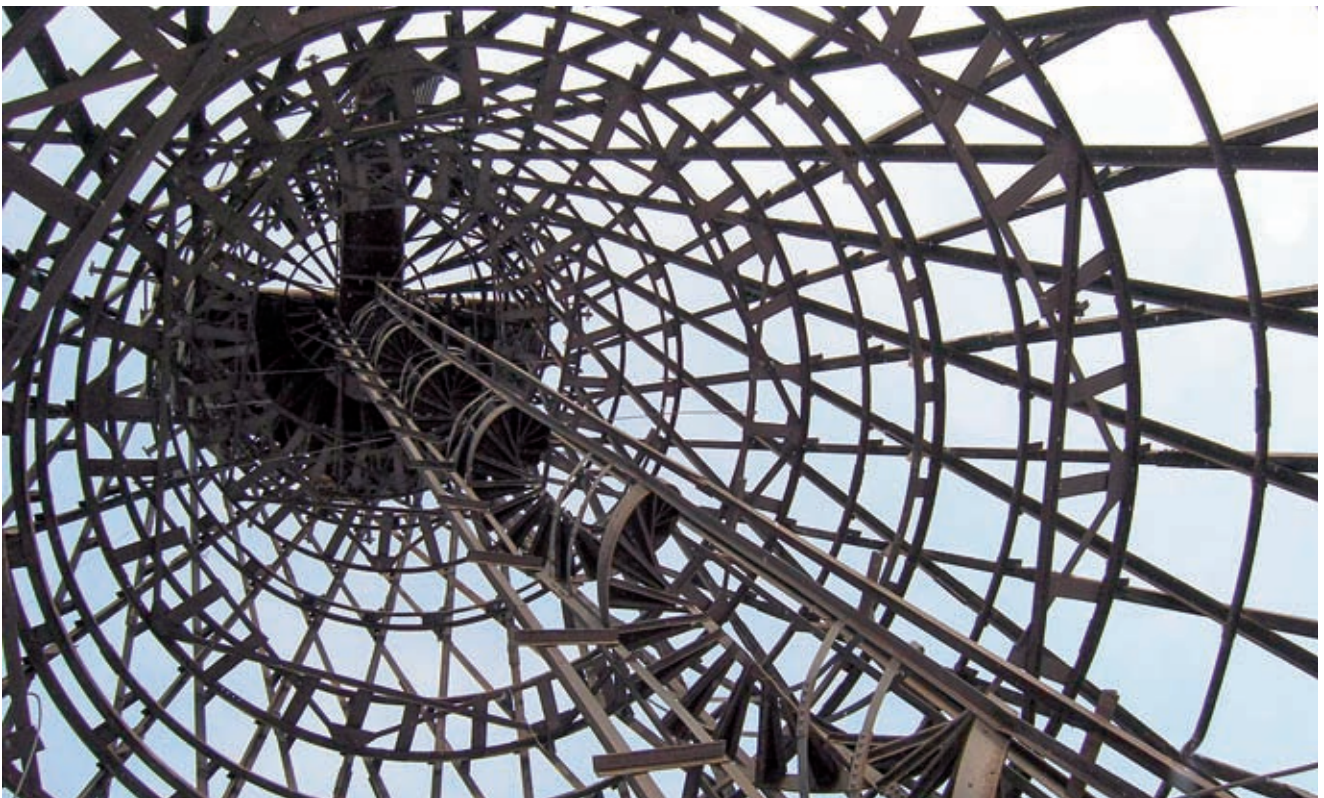
⇒ ⇩ *Gosprom House of the State Industry in Kharkov/Ukraine, 1925–35, arch. S. Serafimov, M. Felger, S. Kravets. Present condition.*  
Credit: A. Bouryak, Kharkov







*The spiral staircase of the Dzerzhinsky Club. Current condition. Credit: T. Budantseva, Delft*



*Watertower in Vyks in the Nizhnij Novgorod region. Present condition. Credit: S. Zelenova, Nizhny Novgorod*

⇒ *Ministry of Foreign Affairs and Foreign Trade building, Moscow, 1949–52, arch. V. Gelfreich, M. Minkus, ing. G. Limanovsky. Condition in 2005. Credit: H. Zimmermann, Berlin*



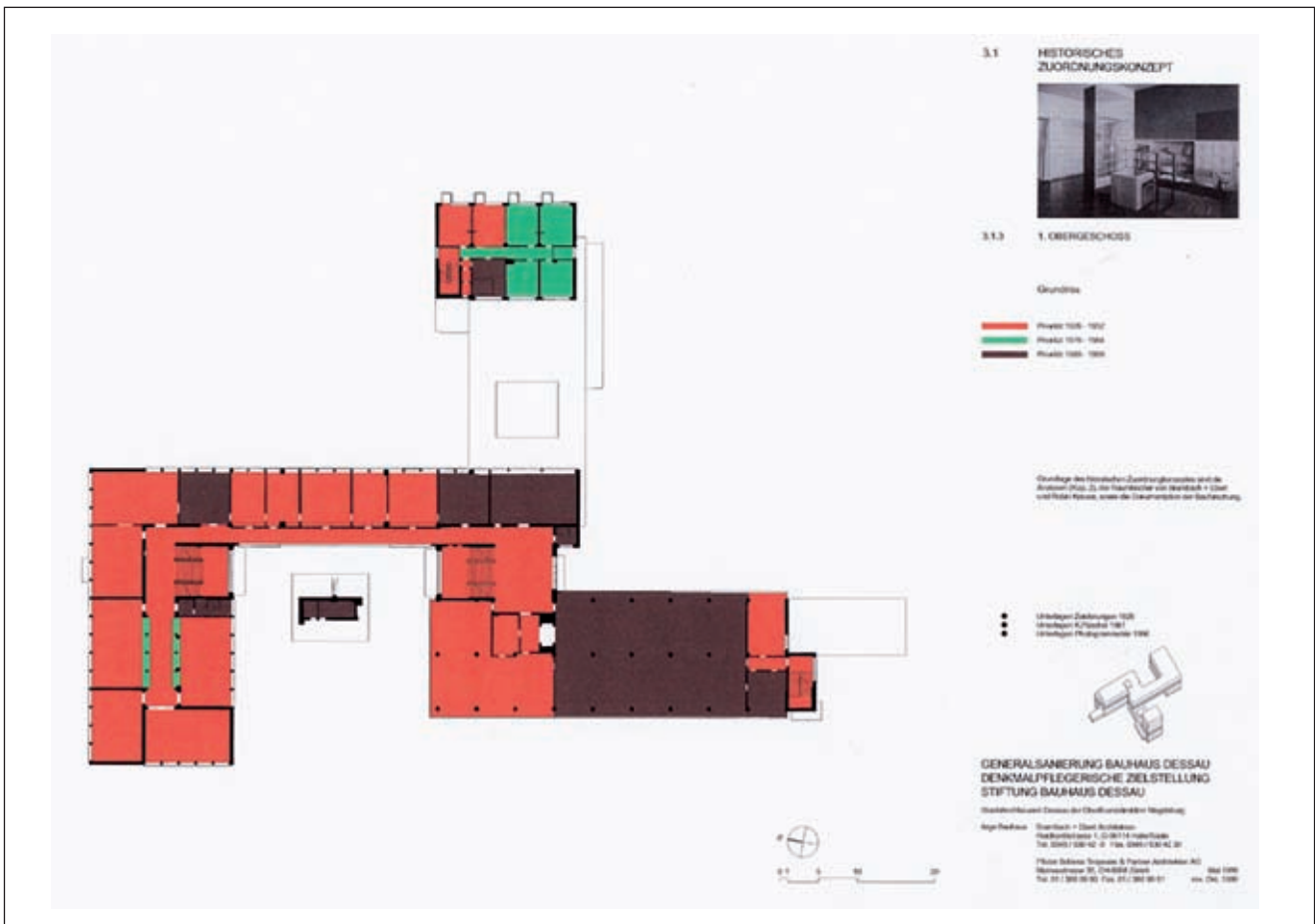






*Bauhaus Building in Dessau, arch. W. Gropius, 1925. Interior of the canteen after the restoration. Current condition. Credit: Bauhaus Dessau Foundation. Photo: H. W. Kunze*





*Bauhaus Building in Dessau, arch. W. Gropius, 1925. Consideration of different historical phases, 1999. Part of the overall rehabilitation plan. Credit: Arge Bauhaus, Brambach and Ebert Halle/Saale and Pfister Schiess Tropeano, Zurich 1999*



*Bauhaus Building in Dessau, arch. W. Gropius, 1925. Balconies of the dormitory after the restoration. Current condition. Credit: Bauhaus Dessau Foundation. Photo: K. Baumann*





⇒ Bruno Taut (1880–1938). Master architect of colourful building in Berlin. Credit: Landesdenkmalamt Berlin, Archive

⇐ ⇓ Garden city Falkenberg at the south-easterly outskirts of Berlin, 1913–15, arch. B. Taut, L. Lesser. Current condition. Credit: Landesdenkmalamt Berlin, W. Bittner







*Wohnstadt Carl Legien, Berlin-Pankow, 1929–30, arch. B. Taut, F. Hillinger. Current condition after restoration, Credit: Winfried Brenne Architekten, Berlin*



*Weiße Stadt (White City), Berlin-Reinickendorf, 1929–31, arch. B. Ahrends, L. Lesser et al. Current condition. Credit: Winfried Brenne Architekten, Berlin*



*Weiße Stadt (White City), Berlin-Reinickendorf, 1929–31, arch. B. Ahrends, L. Lesser et al. Current condition. Credit: Landesdenkmalamt Berlin, W. Reuss*





*Housing block in Berlin-Pankow, Heinz-Bartsch-Straße 4, 1926–27, arch. B. Taut. Before and after restoration (1997 and 1998). Credit: Winfried Brenne Architekten, Berlin*

*MONO school (MONO = Moscow department for education), Moscow, 1929, arch. L. Fedorov, M. Motylov. The important prototype for schoolbuildings of the 1930s in Moscow was completely destroyed during reconstruction works in 2006. Credit: A. Zalivako, Berlin*





⇒ AEG-Cable Factory Oberspree, 1927–28, arch. E. Ziesel, listed monument. Poster of the civil protesting go-in against the destruction, 2006. Credit: Studentische Initiative Kabelfabrik FHTW Berlin



⇓ AEG-Cable Factory Oberspree, 1927–28, arch. E. Ziesel, listed monument. Civil demonstration during the process of destruction, 2006. Credit: Studentische Initiative Kabelfabrik FHTW Berlin







*Dormitory of the former “Krasnaya Professura”-Institute on Pirogovskaya street, Moscow, 1925–28, arch. I. Osipov. It has been decided to demolish the complex. Condition in 2006. Credit: A. Zalivako, Berlin*

*Palace of Congresses, Moscow Kremlin, 1961, arch. M. Posokhin, A. Mndoyants et al. View of the auditorium in 1961 and 2004. Credit: E. Dutlova, Moscow*

